

# ROLLIXO RTS

EN User's manual

## CONTENTS

<b>GENERAL INFORMATION</b> .....	<b>1</b>
<b>SAFETY INSTRUCTIONS</b> .....	<b>2</b>
<b>PRODUCT DESCRIPTION</b> .....	<b>2</b>
<b>USE AND OPERATION</b> .....	<b>3</b>
<b>OPERATING DIAGNOSTICS</b> .....	<b>5</b>
<b>MAINTENANCE</b> .....	<b>6</b>
<b>RECYCLING</b> .....	<b>7</b>
<b>TECHNICAL SPECIFICATIONS</b> .....	<b>7</b>

## GENERAL INFORMATION

Thank you for choosing a SOMFY product. This equipment has been designed and manufactured by Somfy in accordance with a quality policy complying with the ISO 9001 standard.

As part of our policy of continuous innovation and improvement of our models, we reserve the right to make any modifications deemed necessary at any time. © SOMFY. Somfy SAS, with a capital 20.000.000 Euros, RCS Annecy 303.970.230

### About Somfy

Somfy develops, manufactures and sells automatic control devices for domestic opening and closing systems. We offer alarm systems, automatic control devices for awnings, roller shutters, garages and gates. We guarantee all Somfy products will meet your expectations in terms of safety, comfort and time saving on a daily basis.

At Somfy, the pursuit of quality is a continuous process of improvement. Somfy's reputation has been built upon the reliability of its products and the Somfy brand is synonymous with innovation and technological expertise worldwide.

### Assistance

Getting to know our customers, listening to them, meeting their needs: this is Somfy's approach.

For further information on how to choose, purchase or install Somfy systems, please ask your Somfy installer for advice or contact a Somfy advisor directly for help and assistance.

[www.somfy.com](http://www.somfy.com)

### Declaration of Conformity

Somfy declares that this product complies with the essential requirements and other relevant provisions of Directive 1999/5/EC. A Declaration of Conformity is available at [www.somfy.com/ce](http://www.somfy.com/ce) (ROLLIXO RTS). Product can be used in the European Union, Switzerland and Norway.

## SAFETY INSTRUCTIONS

### Caution

If installed and used correctly, the motorisation system conforms to the required safety standards. It is recommended that these rules of conduct be respected to prevent the risk of danger or accidents. Before using the motorisation system, read the user guide carefully and keep it for future reference. Failure to comply with these instructions absolves Somfy of any liability resulting from damage that may be caused. Any use outside the sphere of application specified by Somfy is forbidden. This invalidates the warranty and discharges Somfy of all liability, as does any failure to comply with the instructions given herein.

### Safety instructions relating to use

This device is not designed to be used by persons (including children) whose physical, sensory or mental capacity is impaired, or persons with little experience or knowledge, unless they are under supervision or have received instructions on using the device by a person responsible for their safety.

Monitor the movement of the door and ensure that people are kept at a distance until the end of the movement.

Door in automatic operation - The door may start moving unexpectedly, consequently do not leave anything in the way of the door's trajectory.

Do not allow children to play with the door control devices. Keep remote controls out of the reach of children. Children should be supervised to ensure they do not play with the device.

When using a switch without a locking device (for example: key switch), ensure that other people keep well away.

Every month, check that the door reverses its movement when it encounters an object which is at least 50 mm high on the ground. If this is not the case, contact your installer.

Check the installation frequently to detect any signs of wear, damage or defects in balance. Do not use the system if a repair or adjustment is necessary as a fault in the installation or an incorrectly balanced door can cause injuries.

Have the motorisation checked every year by a qualified technician.

Before handling or performing any maintenance operation, switch off the power supply.

For all direct operations on the motorisation, please contact a qualified technician (installer).

Do not modify the motorisation components.

Never clean the motorisation system with high pressure water cleaning equipment.

Clean the photoelectric cell optical units and light signalling devices. Ensure that branches or shrubs do not obstruct the safety equipment (photoelectric cells).

## PRODUCT DESCRIPTION

The ROLLIXO system has been designed for the motorisation of roller garage doors for residential use. The system comprises:

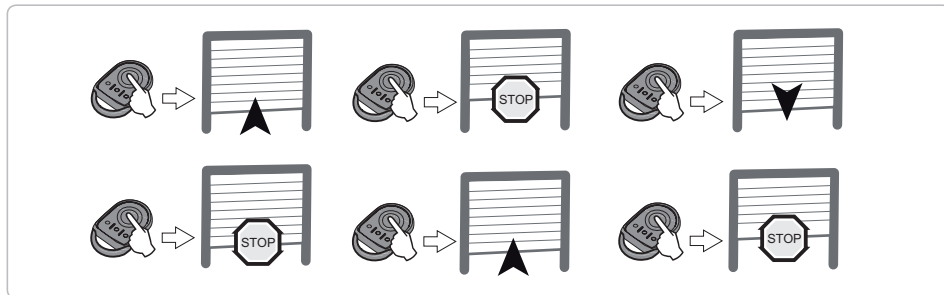
- A tubular motor (RDO CSI) with emergency operation.
- A safety and control receiver (ROLLIXO RTS) with an integrated courtesy light and control buttons in the front panel.

## USE AND OPERATION

### Normal operation

#### Operation with a 2 or 4-button remote control

Press the programmed button to operate the door.



#### Obstacle detection operation

During closing, the detection of an obstacle causes the door to stop and re-open partially.

The receiver warning light  flashes rapidly to indicate that the door has encountered an obstacle.

To return to normal operating mode, a command must be sent.

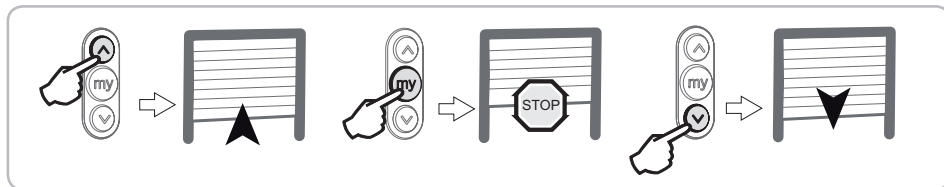
#### Integrated lighting operation

The lighting comes on each time the motor is switched on. It goes out automatically 2 minutes after the door has stopped moving.

### Specific operation

Depending on the additional accessories installed and the operating options programmed by your installer, the system may have the following specific functions:

#### Operation with a 3-button remote control



#### Operation with orange flashing light

The orange light flashes each time the motorisation is switched on, with or without a 2-second warning depending on the configured parameter setting. It stops flashing when the door stops.

#### Operation with cells

An obstacle placed between the cells will prevent the door from closing.

If an obstacle is detected while the door is closing, it stops, then re-opens fully.

The receiver warning light  (||) flashes rapidly until the obstacle is removed.

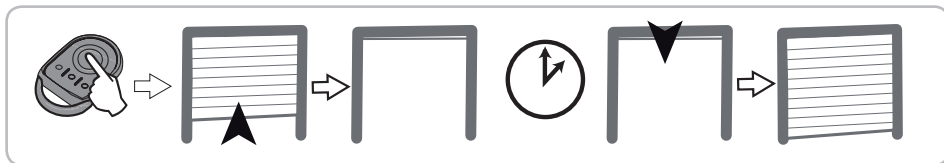
## Operation with the alarm

The alarm is triggered for 2 minutes if the door is raised manually. No movement of the door is possible when the alarm is sounding.

When the alarm sounds, press a button on a remote control memorised in the receiver to stop it. The alarm can only be stopped with a memorised remote control.

## Operation in automatic closure mode

Automatic closure of the door occurs out after a time delay programmed during installation.



A new command during this time delay cancels automatic closing and the door remains open.

The following command results in the closure of the door.

## Adding remote controls



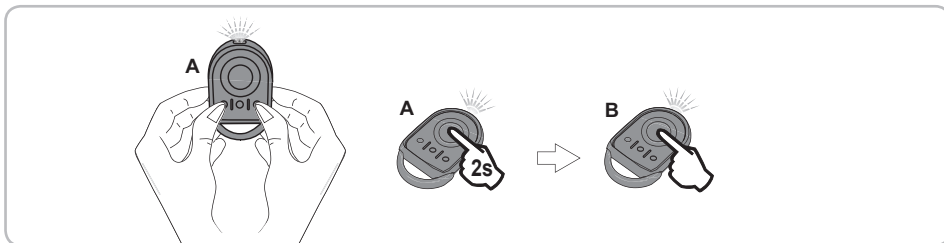
**This operation must be carried out close to the receiver.**

This operation involves adding a remote control to your installation by copying a remote control already used on your installation.

Remote control "A" = "source" remote control already memorised

Remote control "B" = "target" remote control to be added

### 2 or 4-button remote control

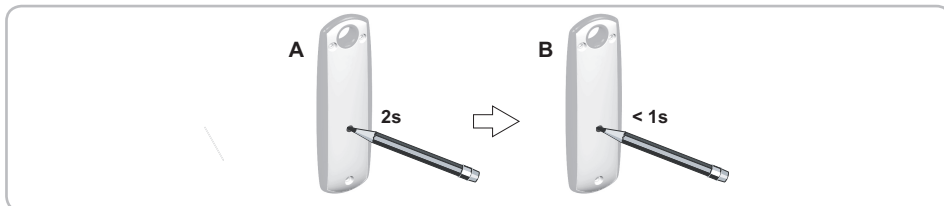


[1]. Press the outer left and right buttons on the previously memorised remote control simultaneously until the green indicator light flashes.

[2]. Press the remote control button A which controls your roller garage door for two seconds.

[3]. Press the button on new remote control B which will control your roller garage door.

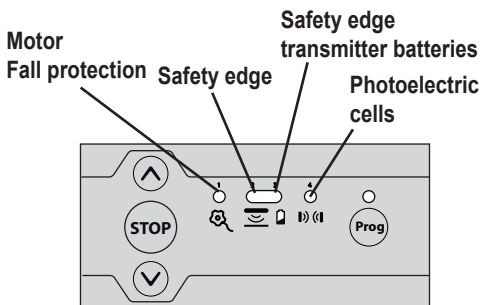
### 3-button remote control



# OPERATING DIAGNOSTICS

The indicator lights on the front of the Rollixo receiver notify the user of the installation's status.

Indicator light status	Meaning
○	Off
☀	Rapid flashing
☀	Permanently lit



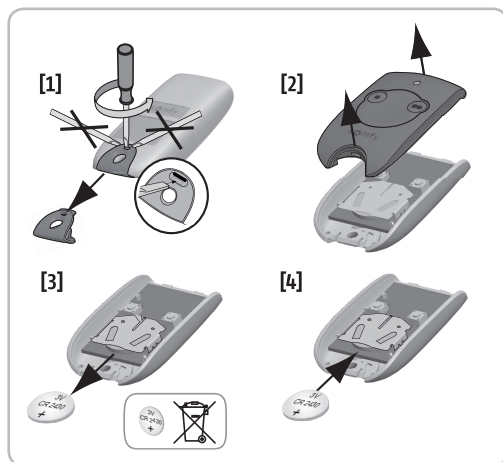
	Indicator light status					Diagnostics	Consequences	Actions/ Troubleshooting
	☀	☀	☀	☀	Prog			
<b>Motor</b>	☀	○	○	○	○	Activated motor thermal protection	No movement possible	Wait around 10 minutes.
<b>Radio safety edge</b>	○	☀	○	○	☀	Radio interference on the safety edge transmitter	Opening and stopping ok Closed by pressing and holding down	If a powerful radio system is present on the site (infrared detector, TV transmitter, etc.) and is transmitting on the same frequency, the receiver will wait for the transmission to end to before controlling the door again.
	○	☀	☀	○	○	Safety edge transmitter low battery indication.	Opening ok Closed by pressing and holding down	If the fault persists, replace the safety edge transmitter batteries.
	○	☀	○	○	○	Obstacle detection	Remove the obstacle by automatic partial opening	Check that no obstacle is causing the safety edge to detect.
<b>Photoelectric cells</b>	○	○	○	☀	○	Cell fault	Opening ok Closed by pressing and holding down	Check that no obstacle is cutting across the cell beam.
	○	○	○	☀	○	Obstacle detection	Remove the obstacle by full automatic opening	Check that no obstacle is cutting across the cell beam

If a fault is still present on your installation, please contact your installer.

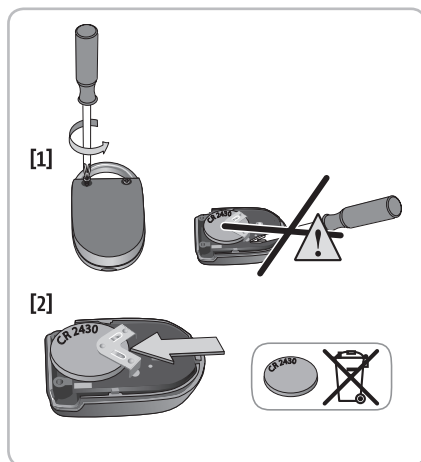
## MAINTENANCE

### Replacing the remote control battery

#### Keytis



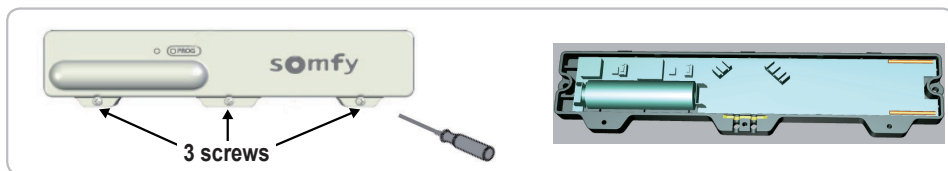
#### Keygo



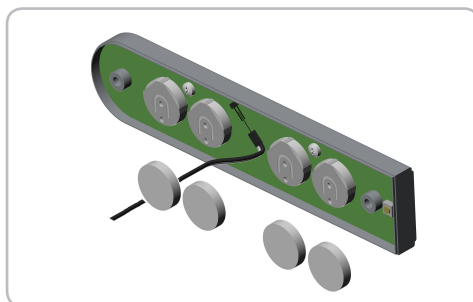
### Replacing the transmitter battery



Only use an AA 3V6 lithium battery (Somfy part number 1782078).  
AA 1V5 alkaline batteries are not compatible.

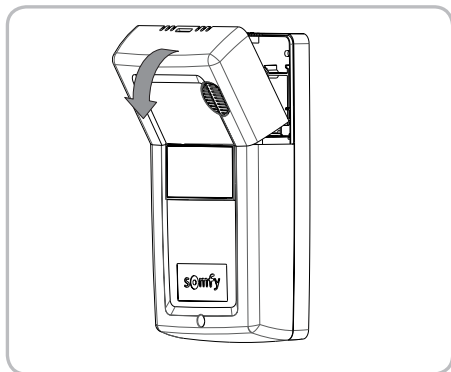


Remove and replace the 4 used batteries with 4 CR 2032, 3V type lithium batteries.

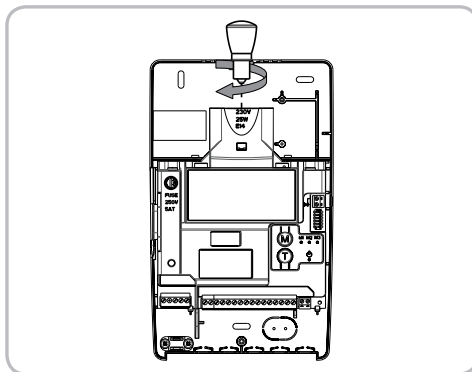


## Replacing the integrated light bulb

[1]. Remove the integrated light bulb.



[2]. Replace the E14 - 25W - 230V type bulb.



## Checking the obstacle detection operation

Every 6 months, check that the door reverses its movement when it encounters an object which is at least 40 mm high on the ground.

## Checking the safety devices (cells)

Check the correct operation every 6 months (see page 4).

## RECYCLING



Do not throw away your scrapped equipment or used batteries with household waste. It is your responsibility to dispose of your electronic equipment in the relevant recycling points.

## TECHNICAL SPECIFICATIONS

Power supply	196 -253 V 50-60 Hz
Climatic operating conditions	- 20°C/+ 60°C - IP 20
Somfy radio frequency	RTS 433.42 MHz
Number of storable channels	32



**Somfy Ltd**

Moorfield Road

Yeadon

Leeds

West Yorkshire

LS19 7BN

T. 0113 391 3030

[www.somfy.co.uk](http://www.somfy.co.uk)