

C Transmitter Coding

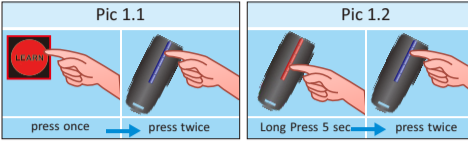
There are two ways to learn a new transmitter:
 1) Bulk Coding same as Factory Setting. (See B)
 2) Assign certain Functions to certain Transmitter Button.

1) Bulk Coding same as Factory Setting. (See B)

1.1 Bulk Coding from Control Panel (see Pic 1.1)
 1.) On Display Press Button **SB**. Display shows **SB**, Courtesy LED Light begins to flash.
 2.) Press new Transmitter **twice** until LED fast flashes. Learning Complete.

1.2 Bulk Coding from coded Transmitter (see Pic 1.2)

1.) On already coded Transmitter Long press **Light Function** (Button 3 on pre-coded Transmitter) for 5 sec. Display shows **SB**, Courtesy LED Light begins to flash.
 2.) Press new Transmitter **twice** until LED fast flashes. Learning Complete.



2) Assign certain Functions to certain Transmitter Button.

Every Button of a Transmitter can be programmed with a different Function as Listed below :

- SB** Bulk Coding - (TX learns Functions as shown in B)
- FB** Run Function - Open/Stop/Close (see B 1)
- HO** Ventilation / Holiday Mode Function (see B 2)
- LI** Light Function - (see B 3)
- AO** Run Function/Auto Close Override - (see B 4)
- OP** OPEN Function - Only OPENS Door
- CO** CLOSE Function - only CLOSES Door

1.) Short press **SB** on Opener,
 2.) Use **+** and **-** to choose the desired function (see List above).

3) Delete all Transmitters

1.) Short press **SB** on Opener,
 2.) Long press 5 sec **SB** until light starts flashing, Finished.



T-Series Garage Door Opener Installation- and User Manual

10-10002-X **EN**
 Version: 3.0t

D Function Setup

1.) To Enter Function Setup Menu: press **+** and **-** at the same time.
 2.) Use **+** and **-** to scroll up and down through the functions. Press **SB** to select the desired function.
 3.) Now choose value with **+** and **-**. Confirm chosen value by pressing **SB**.
 4.) To Exit Function Setup Menu at any time: press **SB**.

Function	Description	Values
SB	Safety Photo Beam	0F Disable Safety Beam 2F Enable Safety Beam in CLOSE and OPEN Direction. 0F Enable Safety Beam in CLOSE Direction
AC	Automatic Close Function <i>Safety Beams SB must be enabled!</i>	0F Safety Beam Function SB not enabled 0F No Auto-Close 05 05 sec / 30 sec 15 15 sec / 90 sec 30 30 sec / 180 sec <i>If Safety Beam is NOT activated by passing car or person: Door automatically closes after 30/90/180 sec.</i>
AS	8.2 kOhm Safety Contact Strip	0F Disable Safety Strip 0F Enable Safety Strip
SP	Running Speed of Opener	HF High Speed TT Tip Up Door Speed LF Low Speed <i>After setup, LI will start. Follow Steps 7-8.</i>
SS	Slow Stop Function	SH Short Slow Stop TL Long Slow Stop 0F No Slow Stop <i>After setup, LI will start. Follow Steps 7-8.</i>
FP	Full Power Mode	0F Function not available in this version <i>After setup, LI will start. Follow Steps 7-8.</i>
CL	Courtesy Light Illumination time	0F 1 min 02 2 min 03 3 min <i>If Courtesy Light is switched on by Hand Transmitter Light Function, it will not automatically switch off.</i>
PR	Partial reverse / Full reverse	0F After Hitting Obstruction, Door will: Partial Reverse 0F After Hitting Obstruction, Door will: Fully Reverse
SR	Signal Reverse / Signal Stop	0F At press TX in Close Direction, Door will: Stop 0F At press TX in Close Direction, Door will: Reverse
VE	Ventilation Mode Time	0F OFF 05 05 30 30 45 45 60 60 75 75 90 90 <i>With activated Ventilation Mode: Short Press Ventilation Mode Button on Transmitter (2nd Button on Bulk Coded Transmitter), Door will close completely, and then re-open between 2-18 cm for Ventilation Purposes. After set 15/30/45/60/75/90 min door will automatically close.</i>
VR	Ventilation Re-Opening Height	0F OFF 08 - 09 Height of Ventilation Slit
DS	Door Service Monitor	0F OFF 0F If Door is out of Balance, Light will flash during run to warn user
CP	Car Park Mode	0F OFF 0F Accessories wired to COM/NO Connector (Key-Switch, Card Readers, etc.) will only trigger OPEN Function. Hand Transmitters are NOT effected by this function.
RT	Maximum Run Time	30 Opener Stops after 30 sec Run Time 60 Opener Stops after 60 sec Run Time
BJ	Back Jump	0F OFF 0F After reaching Close Position, Motor drives back 3mm to release pressure from door
EO	External Flash Light Output	0F OFF 5S Steady Output 3s Delay 6S Blinking Output 3s Delay EU Output same as Courtesy Light

Outside Menu Functions

- HO** Holiday Mode: Press Holiday Function (Button 2 on Bulk-Coded TX) for 3 seconds. Places Opener in a dormant state AFTER closing. **HO** is displayed.
- FR** Factory Reset: Switch off opener first. Initiate Reset by pressing **SB** and power on until Display shows **FR**. Previously coded TX will not be deleted.
- LR** Forced Relearn: Drive Door into ANY Position but CLOSE. Long Press **SB** for 5 sec until Display shows **LI**. See 7-8 for further instructions.
- FT** Fine Tune CLOSE Position: Drive Door into CLOSE Position. Long Press **SB** for 5 sec until Display shows **LI**. See H for further instructions.

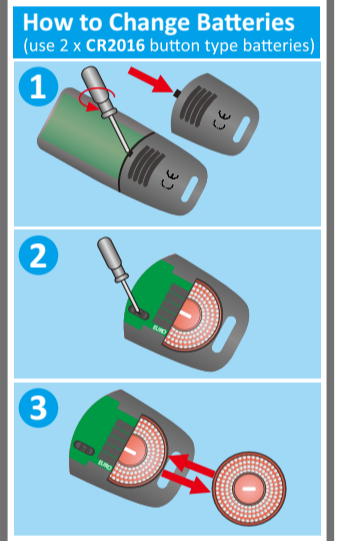
A Control Panel



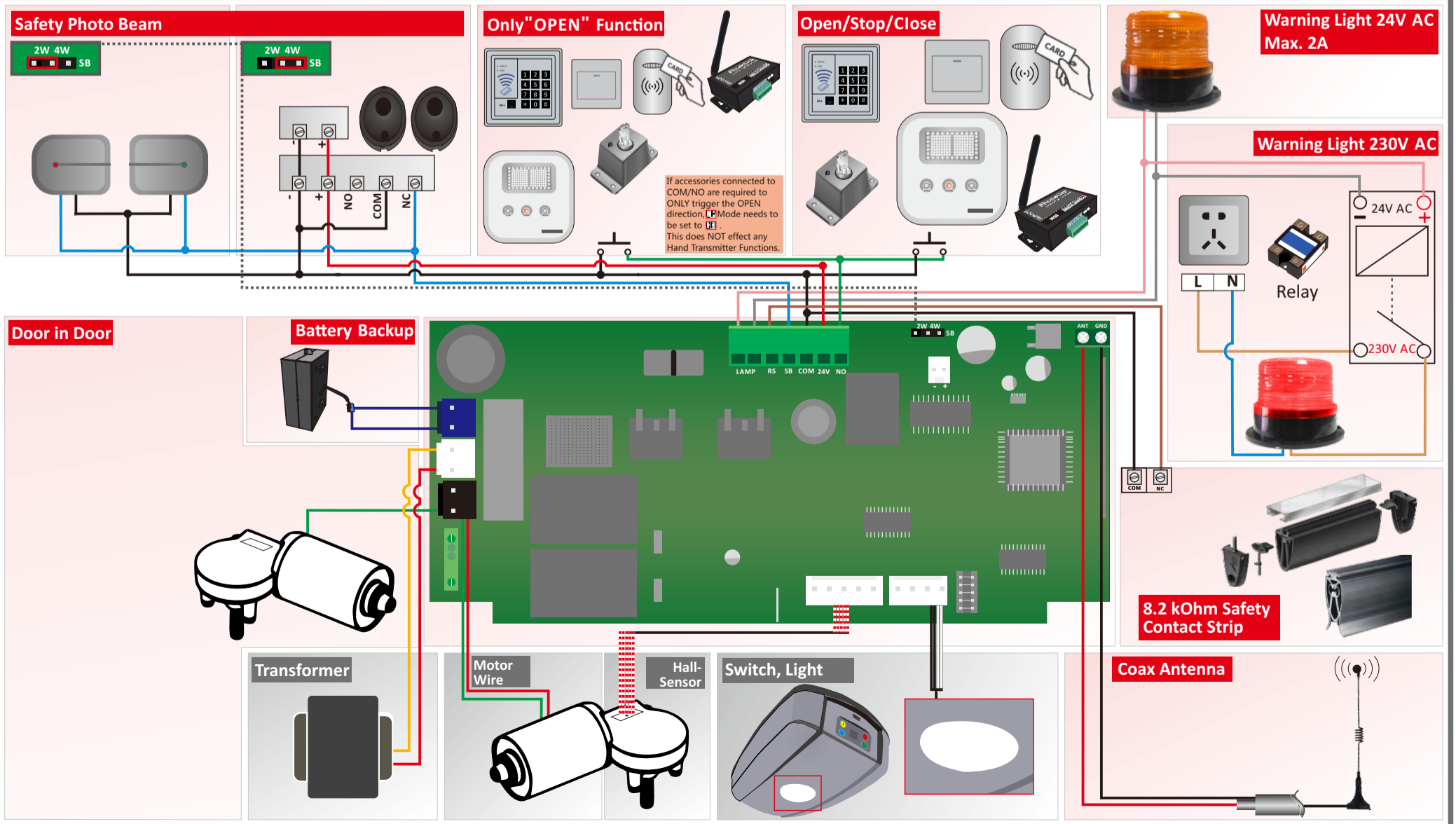
- +** In Standby: Decrease or Increase Force Offset Values (**G**)
 Press **+** and **-** together: Enter Function Setup Menu (**D**)
 In Function Setup Menu: Scroll Functions and Values (**D**)
 In Transmitter Setup Menu: Scroll Functions (**C**)
 In Learning Mode **LI**: Move bullet to forward or
- In Standby: Increase or Decrease Force Offset Values (**G**)
 Press **+** and **-** together: Enter Function Setup Menu (**D**)
 In Function Setup Menu: Scroll Functions and Values (**D**)
 In Transmitter Setup Menu: Scroll Functions (**C**)
 In Learning Mode **LI**: Move bullet to forward or
- LEARN** Short Press: Enter Transmitter Setup Menu (See **C**)
 Long Press (5 sec): Forced Relearn/Fine Tune (See **D** **LI** **LI**)
 In any Setup Menu: Exit Menu.
- CONFIRM** In Standby: Acts as Run Button (Open and Close Door).
 Continuous Press Overrides Safety Beam in Close Direction.
 In Setup Menus: Confirm Chosen Function or Value

B Transmitter Factory Setting

- 1 Run Function**
 Alternately Opens, Closes or Stops the Garage Door.
- 2 Ventilation / Holiday**
 Short Press - Initiates a Drive into Ventilation Mode Position. (Only available if Ventilation Function **VE** is enabled.)
 Long Press (3 sec) - Initiates Holiday Mode. Places Opener into a dormant state after reaching Close position. Refer to **D** **HO** for details. (Only available if Ventilation Function **VE** is disabled.)
- 3 Light / Transmitter Coding**
 Short Press - Switches Courtesy Light ON and OFF.
 Long Press (5 sec) - Enter Transmitter Setup Menu. Refer to **C** for details.
- 4 Run / Auto Close Override**
 If Auto-Close disabled - Functions same as Button 1.
 If Auto-Close enabled - Functions same as Button 1, however Door will not Auto-Close when opened from this button. Press for 3 sec to activate.



E Connection Plan



1 Assemble Rail, Tension Chain

0.5-1mm

2 Load Rail

3 Mount Brackets and Rail

< 50mm

Install Track NOT HIGHER than 50mm above highest arcing point of Door Panel!

4 Position "CLOSE/OPEN" Stopper

CLOSE the Door by hand then position the Stopper as shown in drawing 10mm away from carriage and firmly tighten the lock screws.

10mm

5 Pull Lever, Engage Bullet into Carriage

With Cord pull Lever to horizontal position. Then pull the door down by hand until bullet engages into carriage and "Click" sound is heard.

click

6 Connect to Power Supply

Once connected to Power Supply Courtesy LED Light will begin to flash. is shown in Display. Opener is now in Limit/Force Learn Mode.

OPEN the Door by hand then position the Stopper as shown in drawing 10mm away from carriage and firmly tighten the lock screws.

10mm

7 Press Transmitter Button

Short Press Transmitter Button 1.
1.) Door will **AUTOMATICALLY CLOSE** until reaching Close Position...

8 ... Learning Complete

2.) ... and then **AUTOMATICALLY OPEN** completely, 3.) and then **AUTOMATICALLY CLOSE** again.
Learning Complete when Courtesy Light Blinking and extinguishes.

OK ✓

F Trouble Shooting

In case of an unusual incident, the Courtesy LED light triple flashes, and an Error Code is displayed as below:

E1	1.) Safety Photo Beam obstructed by Obstacle. 2.) Safety Photo Beam malfunctioning or not installed correctly. 3.) Safety Photo Beam not installed, but Safety Photo Beam Function enabled.	1.) Remove Obstacle. 2.) Replace Malfunctioning Device or check Installation. 3.) Install Safety Photo Beam or disable Safety Photo Beam Function.
E2	1.) Safety Contact Strip obstructed by Obstacle. 2.) Safety Contact Strip malfunctioning or not installed correctly. 3.) Safety Contact Strip not installed, but Safety Contact Strip Function enabled.	1.) Remove Obstacle. 2.) Replace Malfunctioning Device or check Installation. 3.) Install Safety Contact Strip or disable Safety Contact Strip Function.
E3	Door imbalanced when Function enabled.	1.) Adjust door balance. 2.) Turn off Function (be aware of the Risks involved).
E4	Maximum Run Time Exceeded.	1.) Check and clear reason that causes the opener exceeding Run Time. 2.) Engage emergency release. 3.) Adjust run time from 30 sec to 60 sec. by function's eep.
E5	During Learn or Re-Learn of Force Values: Door Hit an Obstruction or Exceeded Set Safety Offset Values.	1.) Set Safety Offset Values higher (G). 2.) Adjust Door Balance and Door Installation. 3.) Choose a more powerful Opener Model.
E6	1.) Door hit an Obstacle during Open or Close movement. 2.) Door in improper shape.	1.) Remove Obstacle.
E7	same as (E5).	
E9	Hall Sensor not plugged or malfunctioning.	Plug in or replace Hall Sensor.

G Fine Tune Safety Offset Value

Safety Offset Value determines how easily the door Safety Reverses/Safety Stops when hitting an obstruction. In order to prevent "ghosting" on a big, badly sprung or worn, out door, Safety Value needs to be set to a **higher value** (max.=E5). In order to achieve a more sensitive Safety Reversing, Safety Offset Value needs to be set to a **lower value** (min.=F1). Safety Offset Values can be fine tuned **at any time**.

Fine Tune Safety Offset Value

- At any time, Press or . The current Safety Offset Value is shown.
- Press to increase or to decrease the Value, being the most sensitive being the least sensitive value.
- To confirm new Safety Offset Value press .
- To leave without changes wait 10 seconds or press .

H Fine Tune Close Position

Close Limit Position can be Fine-Tuned **after Learning Process** has been completed.

- Put Door into **CLOSE POSITION**.
- Press for 5 seconds until display shows .
- Now, adjust Close Position by pressing or . Each Press equals 3 mm of travel.
- To confirm new Close Position, short press .